

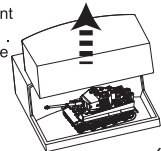
Item No. 23016



German tiger simulation tank instruction

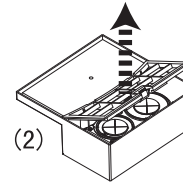
Product features:
Playing time: 10-15 minutes (equipped with
large capacity battery:
1 x 3.7V 110mAh lipo battery)
Remote control distance: ≥20 meters;

Preparation:
1. Remove the transparent
tape and take out the
plastic cover box as the
arrow pointed.



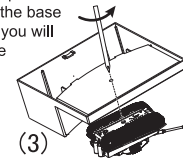
(1)

2. Open the cover and take out the
transmitter and antenna.



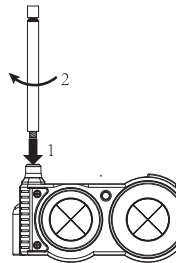
(2)

3. Using a Phillips screwdriver
to unscrew the base
cover, then you will
get a unique
RC tank.

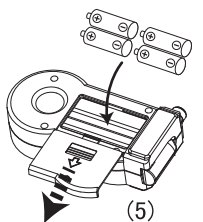


(3)

4. Insert the antenna into the
transmitter and tighten it.



(4)

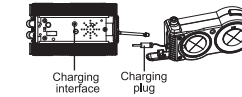


(5)

5. Open the battery cover,
insert 4x1.5V AA battery
with correct polarity and
close the battery cover.

Charging:

Open the transparent cover and pull out the charging
plug, insert the charging plug into the charging interface
on the bottom of the tank, you will see the charging
indicator lighting up, after 20-30 minutes, charging
indicator will be off which means the tank is fully recharged,
at the end, please pull out the charging plug.

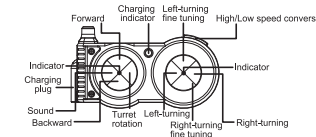


(5)

Operation:

1. Fully extend the antenna when playing, turn the power
switch on the tank to "ON" position.
2. When press the "high/low speed conversion" button, the
tank will switch between high and low speed.
3. Press the "forward" or "backward" button, the tank will go
forward or backward, meanwhile interval click the "left-turning"
or "right-turning" button will change the running direction. (tank
will have a running sound under this action)

4. Press the "left -turning" button or "right turning" button, the tank will spin around
clockwise or anticlockwise
5. Press the "forward" button and "left-turning" button at the same time, the tank will
rotate along with a fixed axis, switching between "forward", "backward", "left-turning"
and "right-turning" button will have different direction of fixed axis- rotation.
6. Press the "turret rotation" button, the tank turret will have a 360-degree rotating.
The gun barrel will have aiming function (moving up and down) when the turret
rotates. When the tank under static state or moving state, interval click the
"turret rotation" button will change the Rotation direction of the turret. (mean
while the turret will send out machinery movement sounds)
7. Press the "sound " button on the transmitter, the tank will have firing projectile
sounds and impulsive force dynamic effect.
8. Press the "turret rotation" button and click the "high /low speed conversion" button
at the same time, this action will turn on /off the sounds.



Caution:

a) This tank uses 3.7V 110mAh rechargeable lipo battery, transmitter uses 4 * 1.5V AA non-rechargeable battery.
b) If the tank becomes apparently slow during operation, this may be due to insufficient power, please charge
the tank as this manual describes.
c) The tank cannot be charged when the transmitter is out of power, this happens when the transmitter's indicator light
goes dim or is off, please replace the old batteries.
d) Pay attention to the charging plug and interface when you charge the tank.
e) When not using the tank for a long period, please remove the battery from the transmitter and turn off the tank.
f) Non-rechargeable battery cannot be charged.
g) Please do not mix old and new batteries or different types of batteries.
h) Pay attention to the "+", "-" polarity of the battery when installing.
i) Avoid short circuiting by the "+", "-" polarity on the battery.
j) When removing the package, please make sure there is an adult present.
k) Keep this manual for future reference.
l) Please check the battery charger at regular intervals, check for any damage to the wire, plug, cover and other parts,
please stop using if damage occurs until repaired.

Battery recycling:

1. Please DO NOT dispose of this equipment as daily trash. Damaged or exhausted batteries should be put into a
special container.
2. This equipment is composed of electronic components and batteries, they belong to electronic waste, please
process it according to specific requirements.
3. Please be familiar with your local waste processing methods.